



OBERDORFER®

An Ingersoll Rand Business

Model 172B Bronze Close Coupled Centrifugal Pump



Features

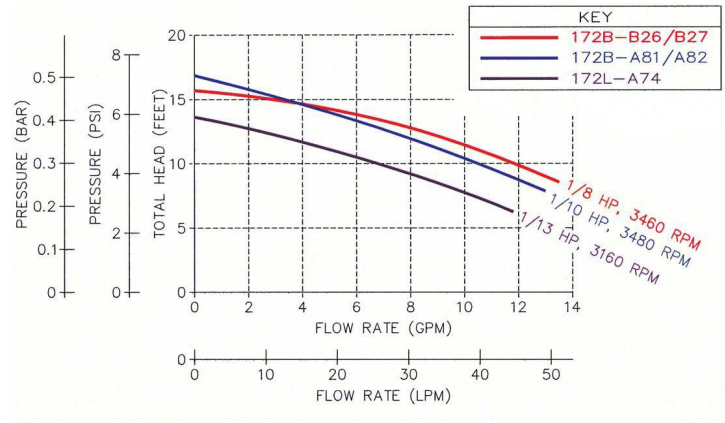
- Pipe Size: Inlet: 3/4", Outlet: 3/4" (Option 1/2")
- Rugged corrosion resistant bronze construction
- Compact and light
- Mechanical Seals - Type 6A/68 (Buna Standard, Optional Viton)
- TEFC Motors with corrosion resistant passivated 316 SS Shafts
 - 1/10 HP permanent Magnet 12V, 24V, 32V DC Motors
 - Rubber base grommets for vibration dampening
 - Insulated leads
 - 1/8 HP Capacitor Start 50/60 HZ, 115V & 220V AC Motors
 - Ignition protection
 - Thermal overload protection
 - Power cord with plug
- Ideal for:
 - Marine Air Conditioning
 - Engine Block Temperature Control
 - Radiator and Heat Exchanger Circulation
 - Baitwell Circulation

Seal

The pump uses a mechanical type shaft seal with a Buna rubber element. It is suitable for water, oils, and some mild solvents and is limited to 212°F, Viton® is available for up to 400°F.

Performance

Capacity Water at 70°F



Liquids

One of the outstanding features of this pump and motor unit is its compact size. Although small, adequate motor power is available for pumping water, water solutions, and a wide range of commercial chemicals. Questions about the chemical compatibility of special liquids should be referred to the factory. Viscous liquids with a maximum viscosity of 2000 Saybolt

Seconds Universal can be pumped. However, when pumping viscous liquids (as compared with water) a reduction in flow and pressure occurs and the required horsepower increases.

Liquids heavier than water require additional horsepower in direct proportion to the increase in specific gravity

Characteristics

These Oberdorfer centrifugal pumps have a single open vane rotating impeller. Liquid enters at the center and is thrown outward radially by centrifugal force. The impeller is not in contact with other pump parts resulting in quiet, efficient pumping action. The flow produced is not positive which permits the discharge line to be shut off completely without danger of overloading motors or bursting lines. Consequently, a relief valve is not required.

These pumps are not self-priming. They must be installed below the liquid level so that the liquid flows to the pump by gravity (flooded suction).

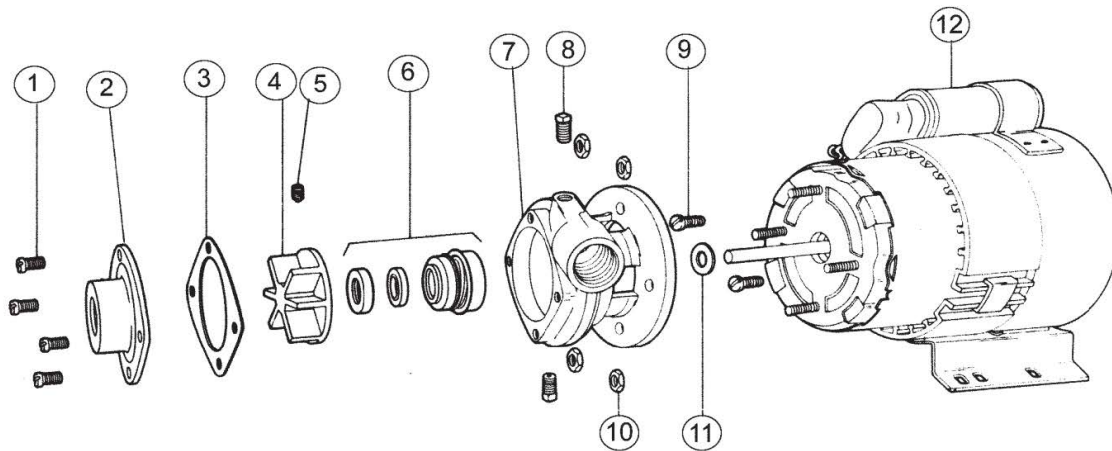
The flow of these pumps can be conveniently controlled by a throttling valve in the discharge line. Horsepower demand will decrease as the pressure increases. Maximum horsepower occurs with a wide open discharge.



OBERDORFER®

An Ingersoll Rand Business

Exploded View and Parts List



Model 172B

Model 172B		1	2	3*	4*	5*	6*		7	8	11	Repair Kit
		Screw	Cover	O-Ring	Impeller	Set Screw	Seal Assy		Body	Plug	Slinger	
Pump	Config	Qty. 4	Qty. 1	Qty. 1	Qty. 1	Qty. 1	Qty. 1		Qty. 1	Qty. 2	Qty. 1	
OB172B	Std. NBR Mech. Seal	OB5385	OB7375-1	OB9797-033	OB7678	OB6079	OB32458		OB7456-1	OB5395	OB6651	OB11071
OB172B-03	Std. NBR Mech. Seal, Vertical Outlet	OB5385	OB7375-1	OB9797-033	OB7678	OB6079	OB32458		OB7456-1	OB7687	OB6651	OB11071
OB172B-07	Std. NBR Mech. Seal, 1/2 NPT Inlet	OB5385	OB7275-1	OB9797-033	OB7678	OB6079	OB32458		OB7456-1	OB6052	OB6651	OB11071
OB172B-08	FKM Type 6A Mech. Seal	OB5385	OB7375-1	OB9797-033	OB7678	OB6079	OB8174	OB807901	OB9786-1	OB5395	OB6651	OB12004
OB172BS17	FKM Type 6A Mech. Seal	OB5385	OB7375-1	OB9797-033	OB7678	OB6079	OB2079	OB807901	OB7456-1	OB5395	OB6651	OB12336

*Items 3, 4, 5 & 6 included in Repair Kits.

Motor	Config	9	10a	10b		12	13
		Screw	Hex Nut	Lockwasher		Motor	Grommet
		Qty. 2	Qty. 4	Qty. 2 or 4		Qty. 1	Qty. 4
A81	1/10 HP, 3480 RPM, 12 VDC, TEFC	OB7424	--	OB5656	2	OB9950	OB6650
A82	1/10 HP, 3480 RPM, 24 VDC, TEFC	OB7424	--	OB5656	2	OB9949	OB6650
A87	1/10 HP, 3480 RPM, 32 VDC, TEFC	OB7424	--	OB5656	2	OB8103	OB6650
B26	1/8 HP, 3460 RPM, 115 VDC, 50/60HZ TEFC , IGNITION PROTECTED	--	OB7686	OB5656	4	OB8281	--
B27	1/8 HP, 3460 RPM, 230 VDC, 50/60HZ TEFC , IGNITION PROTECT	--	OB7686	OB5656	4	OB8282	--



12500 South Pulaski Road
Alsip, IL 60803, USA
Phone (800) 448.1668

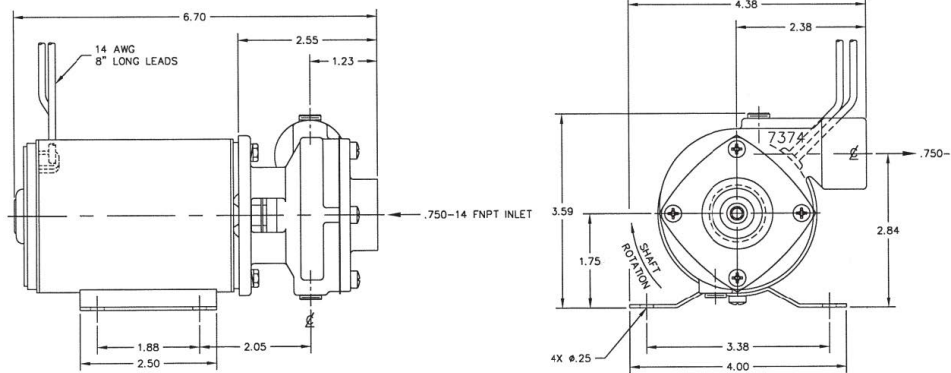


OBERDORFER[®]

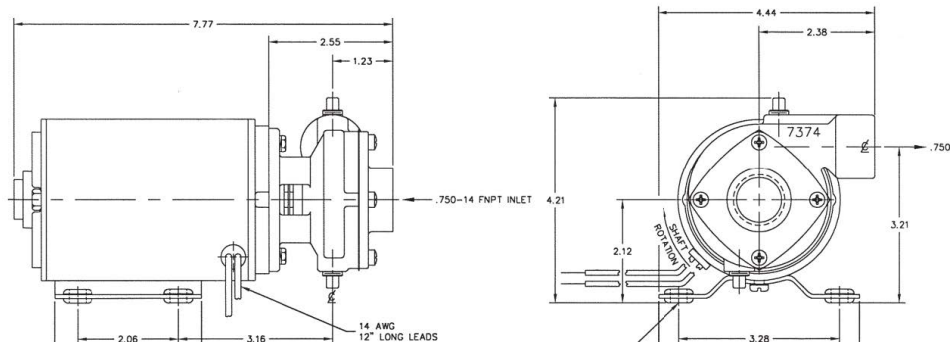
An Ingersoll Rand Business

Dimensions

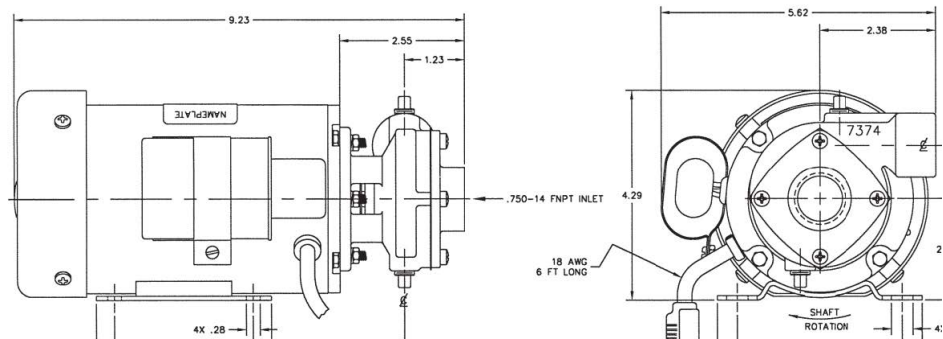
172L'S WITH A74 MOTOR



172B'S WITH A81 OR A82 MOTOR



172B'S WITH B26 OR B27 MOTOR



12500 South Pulaski Road
Alsip, IL 60803, USA
Phone (800) 448.1668